

ATTACHMENTS / PARTS (Volunteer Utility Vehicles)

Attachment Model Affected: 39A70003 (39A70003100) Volunteer Utility Vehicle Bench Seat
Volunteer Models Affected: 4x4 Volunteer WT, Aluminum Bed (37AM486M010).
 4x4 Volunteer WT, Aluminum Bed With Mauser Cab (37AM48FM010).
Date: November 13, 2015
Subject: Modify Bottom Seat Bench 757-04068 FIX-AS-FAIL

NOTE: These materials are prepared for use by trained technicians who are experienced in the service and repair of equipment of the kind described in this publication, and are not intended for use by untrained or inexperienced individuals. Such individuals should seek the assistance of an authorized service technician or dealer.

NOTE: Always wear eye protection while servicing equipment. Wear hearing protection when appropriate. Always work in a well ventilated area and follow all safety precautions when dealing with combustible materials.

NOTE: Left (LH) and Right (RH) sides are determined from the operator's position and facing in the forward direction.

PURPOSE:

When needing to install the optional Volunteer Utility Vehicle Bench Seat (39A70003100) Accessory / Attachment onto either of the Volunteer Utility Vehicle models listed above, the bottom seat bench (757-04068) will need to be modified to fit this application.

ACTION REQUIRED:

Before attempting to install the optional Accessory / Attachment (39A70003100), the bottom seat bench (757-04068) contained within will need to be modified.

Follow the instructions starting on Page 2 of this Advisory for modifying the bottom seat bench (757-04068).

File a warranty claim (one attachment per claim) for labor only.



FIGURE 1

Warranty: Normal warranty terms apply. Indicate Service Advisory **CC-894** and **757-04068** as the original failed part on the claim. Repair time allowance is **0.33** Hrs.

Mandatory>>>When completing the warranty claim, select the drop down text shown below for the following claim fields:

GROUP CODE: Body panel/Cover/Seat

FAIL CODE: Adjustment

WORK PERFORMED: (Type In) Modify Seat Base 757-04068

SERVICE MANAGER	PARTS MANAGER	SALES MANAGER	SERVICE TECH.	SERVICE TECH.

Circulate and Initial

1. Locate the bottom seat bench (757-04068) from the optional Accessory / Attachment (39A70003100) Volunteer Utility Vehicle Bench Seat. See Figure 2.

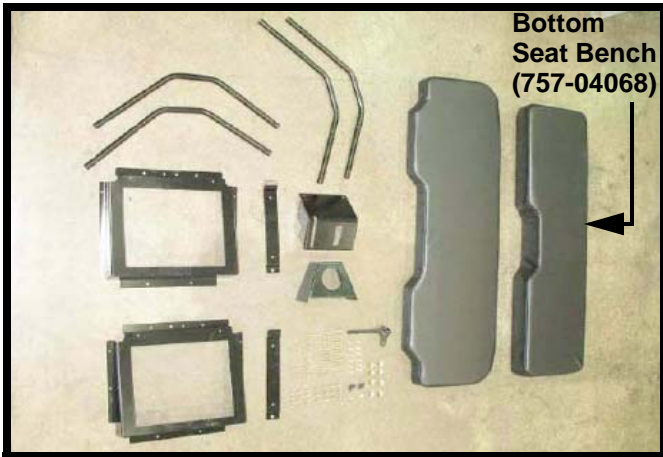


FIGURE 2

2. Use a section of the cardboard box the optional Volunteer Utility Vehicle Bench Seat attachment was shipped in as a protective surface.

3. On a clean flat work surface, lay the bottom seat bench (757-04068), vinyl side down on top of the piece of cardboard. See Figure 3

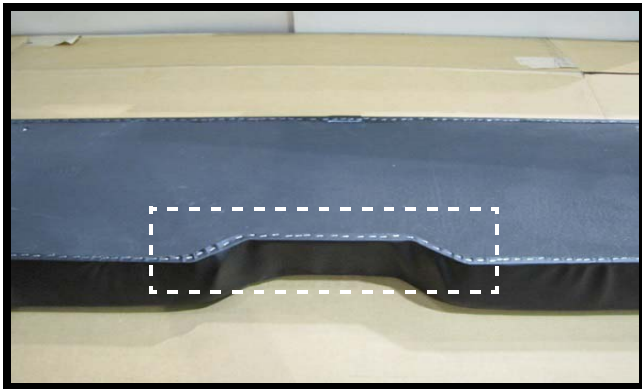


FIGURE 3

4. The staples need to be removed inside the area outlined in Figure 3.

5. Carefully pry up the staples securing the vinyl seat cover to the black plywood seat base with a small flat blade pocket screwdriver as shown in Figure 4.



FIGURE 4

6. Use a pair of pliers to remove the staples as shown in Figure 5. Discard the staples.



FIGURE 5

7. Slowly peel back the vinyl covering to expose the 1/2" (0.500") plywood seat base.

8. Use a 12" ruler and draw a line extending from each of the points shown towards the center of the seat bottom. See Figure 6.

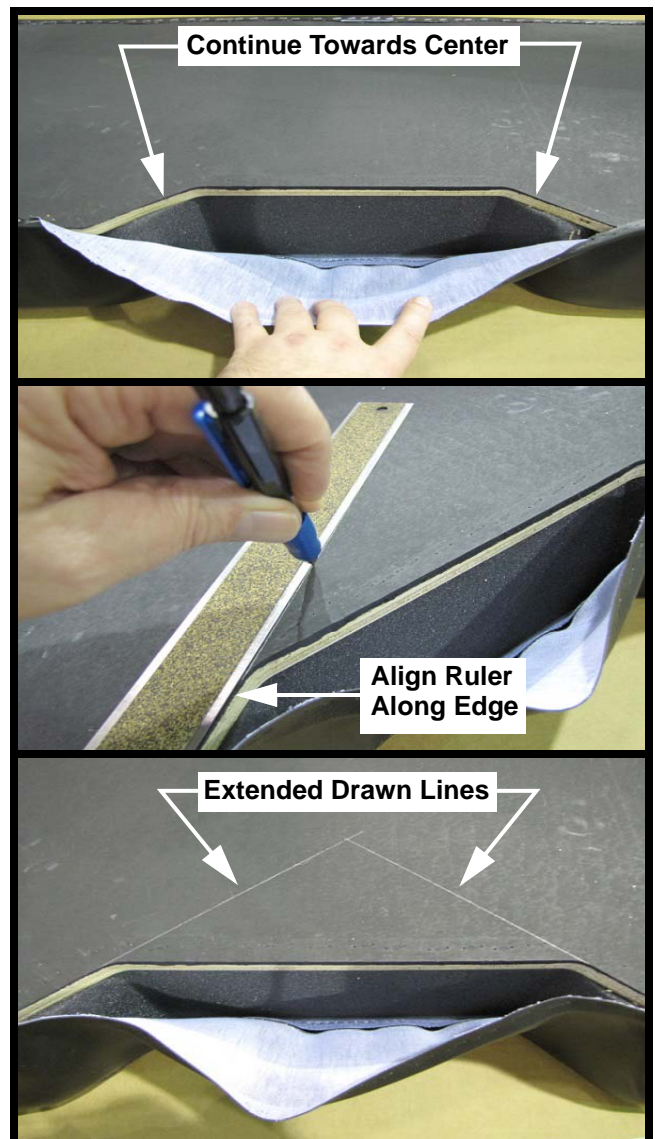


FIGURE 6

9. From the center edge of the 1/2" plywood seat base, measure towards the center 1-1/4" (1.250") on each side and make a mark as shown in Figure 7.

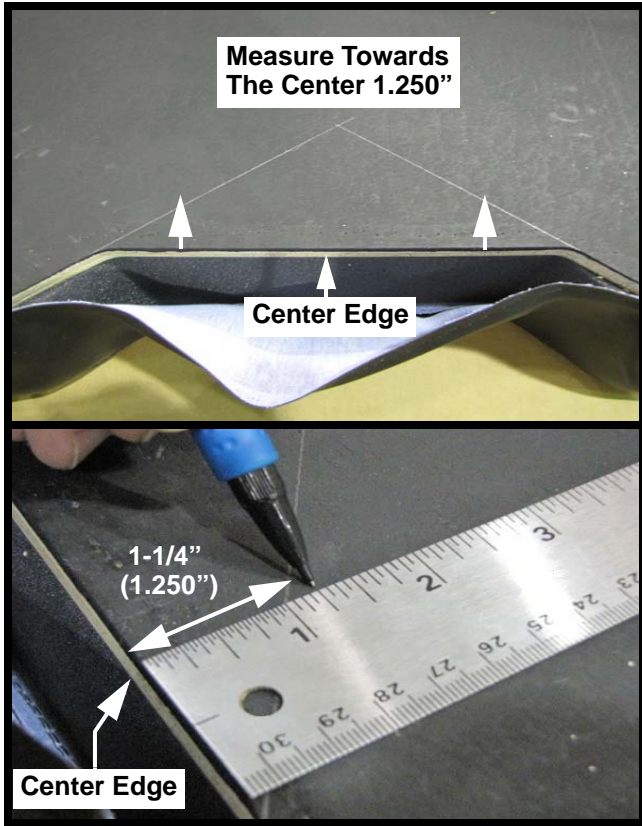


FIGURE 7

10. Draw a connecting line from the two (2) marks made in Step 9.

11. The 1/2" plywood within the red highlighted area marked "REMOVE" will need to be cut out. See figure 8.

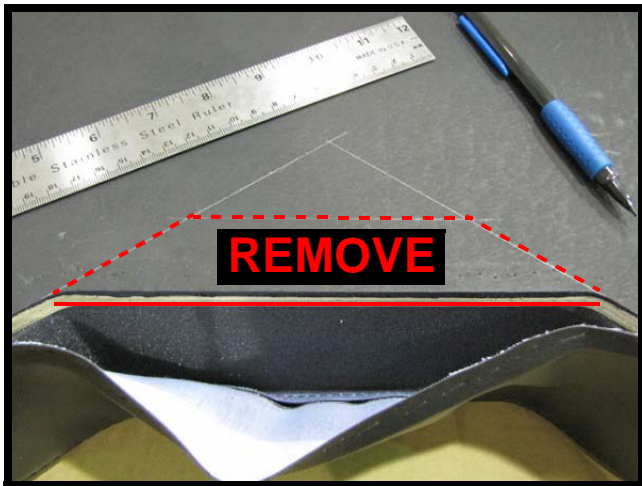


FIGURE 8

12. Use a saber saw and cut along the dotted lines shown in Figure 8 & 9. Use the appropriate blade and cut at a slow speed. See Figure 9.

NOTE: Cutting into the foam is OK since it will also need to be removed.



FIGURE 9

13. Measure 2" (2.000") down from the top of the foam and draw a line with a permanent marker horizontally across the foam. See Figure 10.

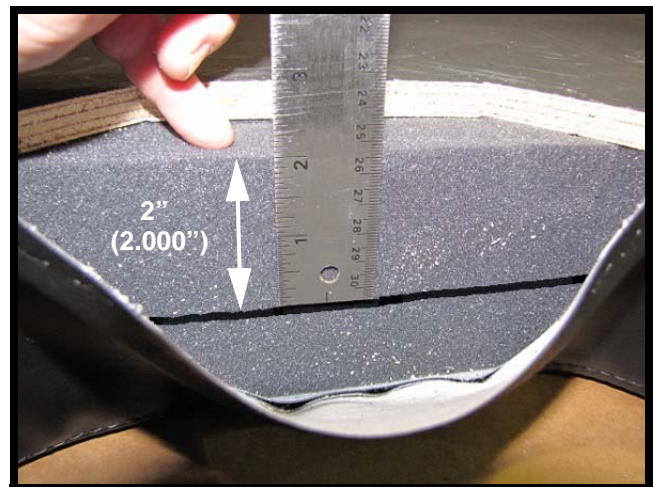


FIGURE 10

14. Use a utility knife to cut in along the horizontal line made in Step 13 and down along the cut lines made with the saber saw in Step 12. These two cuts need to intersect to remove the section of foam. See Figure 11.

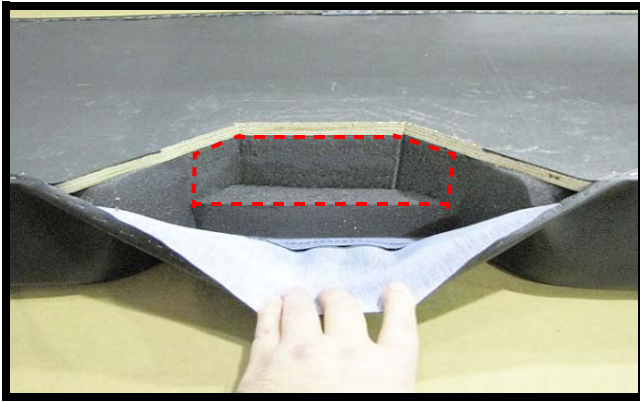


FIGURE 11

15. Use an air gun and carefully blow off all sawdust and debris.

16. For the next Step a staple gun will be needed.

NOTE: T50® Staples with a 1/2" (0.500") leg will be required.

17. Starting at one end, pull the vinyl covering so that a minimum of 3/8" (0.3750") is overlapping the edge of the plywood seat base. See Figure 12.

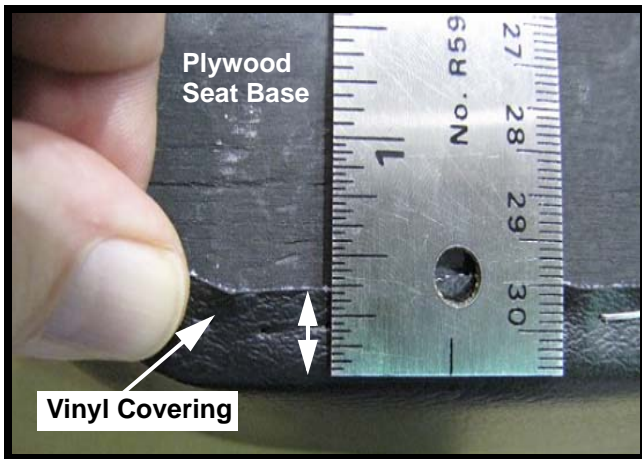


FIGURE 12

18. Slowly work towards the opposite end keeping the vinyl covering tight. Place the staples as close to the center of the 3/8" (0.3750") overlap as possible and approximately 1/4" (0.250") apart.

NOTE: Keep the staples away from the edge of the plywood seat base.

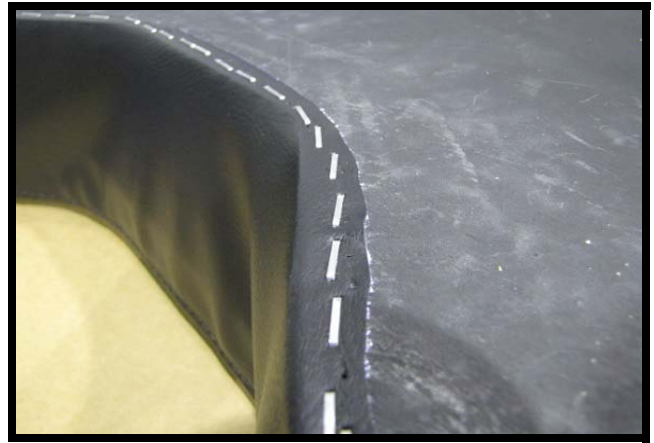


FIGURE 13

19. If needed use a small ball peen hammer to set the staples flush.

20. Once completed the bottom seat bench should look as follows. If needed, additional staples may be installed. See Figure 14.

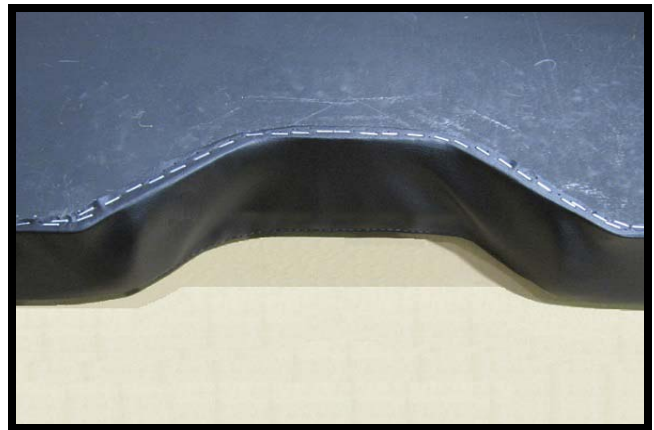


FIGURE 14

21. The modified bottom seat bench (757-04068) can now be installed on a Volunteer Utility Vehicles with an Aluminum bed, models (37AM486M010) and (37AM48FM010).

22. Follow the instruction sheet (769-03322) packaged with the (39A70003100) Volunteer Utility Vehicle Bench Seat Accessory / Attachment for installation procedures.