

**ATTACHMENTS / PARTS**

**Date:** August 11, 2015

**Subject:** 618-07082 Replacement Service Kit

**Part Numbers Affected:** 618-07082, 918-07082 Tuff Torq Hydro Transmission Assembly

**PURPOSE:**

The Tuff Torq Transmission Assembly **618-07082 / 918-07082** has been replaced by **618-07209 / 918-07209**. A change was made to the location of a mounting boss on the upper housing for the belt keeper.

**NOTE:** These materials are prepared for use by trained technicians who are experienced in the service and repair of equipment of the kind described in this publication, and are not intended for use by untrained or inexperienced individuals. Such individuals should seek the assistance of an authorized service technician or dealer.

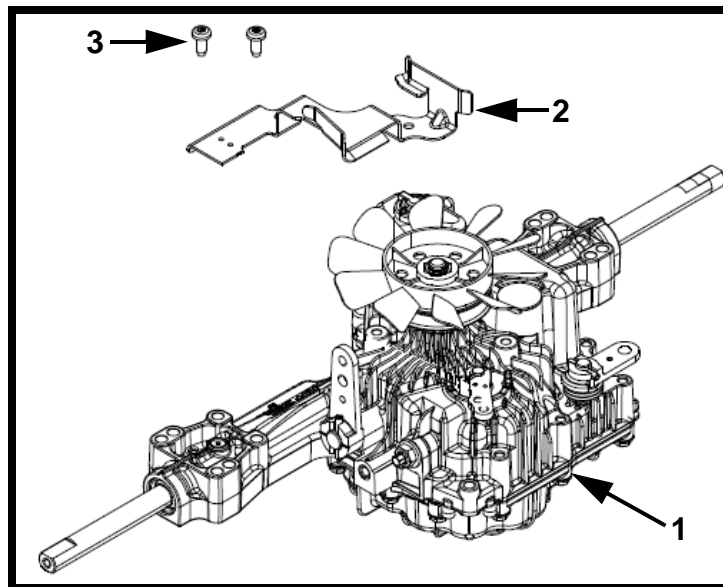
**NOTE:** Always wear eye protection while servicing equipment. Wear hearing protection when appropriate. Always work in a well ventilated area and follow all safety precautions when dealing with combustible materials.

**NOTE:** Left (LH) and Right (RH) sides are determined from the operator's position and facing in the forward direction.

**759-05098 Service Kit Contents**

ITEM NO.	PART NUMBER	QTY	DESCRIPTION
1	618-07209	1	TRANS ASM:HYDRO:K46:ETC
2	783-08991	1	BRKT:KEEPR:BELT:TUFF TORQ
3	710-1611B	2	SCR:TT:5/16-18:0.750:PANTRX

*Instruction sheet included with kit.*

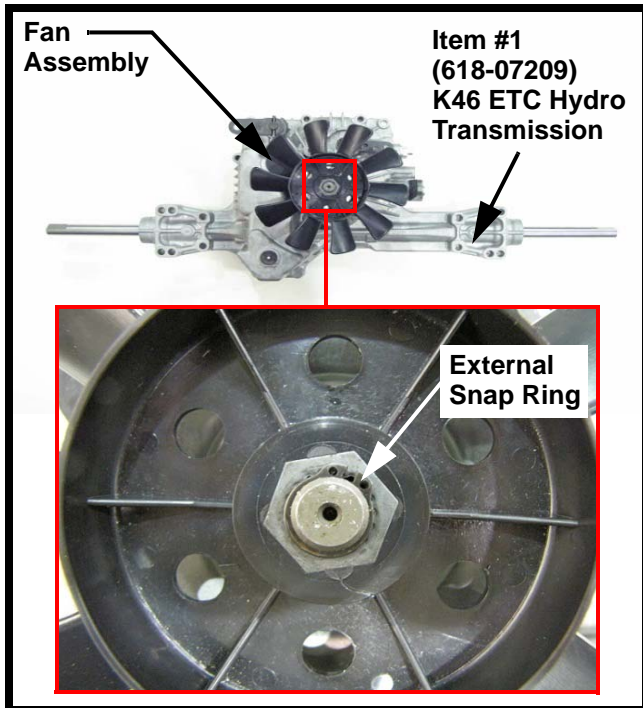


**FIGURE 1**

Prior to installation of Item #1 (**618-07209**) K46 ETC Hydro Transmission Assembly into the tractor follow the instructions on Page 2.

### Set-Up Instructions:

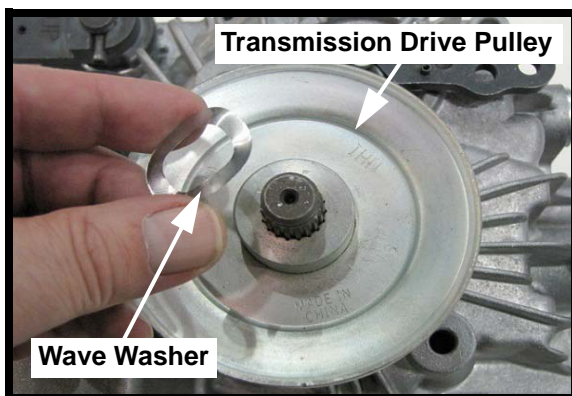
1. Set Item #1 (618-07209) K46 ETC Hydro Transmission Assembly on a flat level workbench surface
2. Remove the external snap ring that secures the fan assembly to the K46 ETC Hydro Transmission input shaft. See Figure 2.



**FIGURE 2**

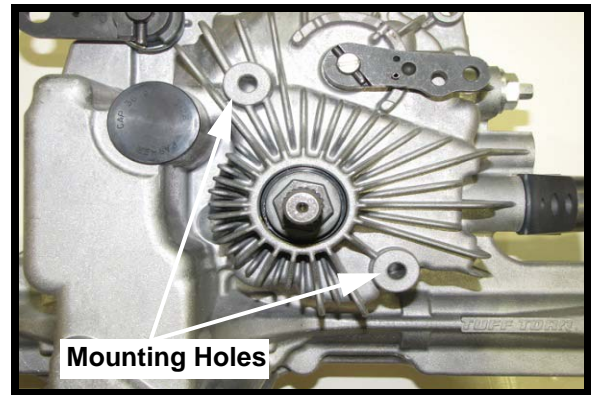
3. Remove the fan assembly.
4. Remove the wave washer and transmission drive pulley. See Figure 3.

**NOTE: Retain the external snap ring, fan assembly and wave washer for installation after the transmission is installed in the tractor.**



**FIGURE 3**

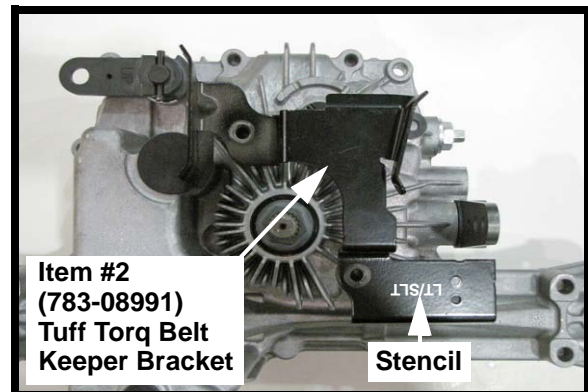
5. Locate the two (2) holes for mounting the Tuff Torq Belt Keeper Bracket. Notice that the holes are not threaded. See Figure 4. Use Item #3 (710-1611B) 5/16-18 x 0.750" Tap Tite Screws to cut threads into the holes. Slowly thread the screws all the way in, then remove them.



**FIGURE 4**

6. Install Item #2 (783-08991) Tuff Torq Belt Keeper Bracket as shown in Figure 5, then install both of Item #3 (710-1611B) 5/16-18 x 0.750" Tap Tite Screws. Torque to 180-220 in. lbs.

**NOTE: Item #2 (783-08991) Tuff Torq Belt Keeper Bracket will have LT/SLT stencil in the area shown in Figure 5. Stencil shown in white for photo.**



**FIGURE 5**

7. Install the transmission drive pulley onto the input shaft of the transmission.
8. The K46 ETC Hydro Transmission Assembly is ready to install into the tractor.



**FIGURE 6**

9. After installation of the K46 ETC Hydro Transmission Assembly, install the drive belt around the transmission drive pulley, then install the wave washer, fan and the external snap ring.