

**ATTACHMENTS / PARTS**

**Model Affected:** 42" 3X Snow Thrower (19A40024100)

**Serial Number**

**Range Affected:** September 09, 2014 through October 24, 2014 (11094BXXXXX through 1J244BXXXXX).

**Date:** September 15, 2015

**Subject:** Incorrect Length Snow Thrower Lift Cable Assembly

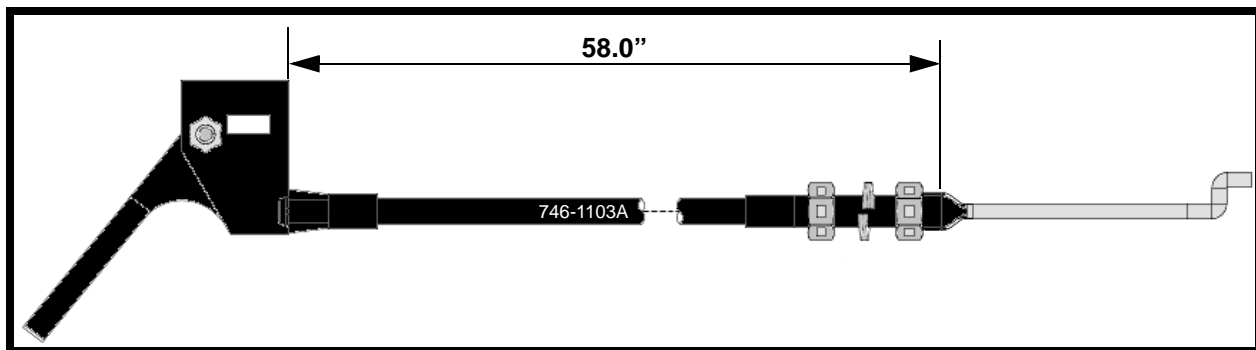
**NOTE:** These materials are prepared for use by trained technicians who are experienced in the service and repair of equipment of the kind described in this publication, and are not intended for use by untrained or inexperienced individuals. Such individuals should seek the assistance of an authorized service technician or dealer.

**NOTE:** Always wear eye protection while servicing equipment. Wear hearing protection when appropriate. Always work in a well ventilated area and follow all safety precautions when dealing with combustible materials.

**NOTE:** Left (LH) and Right (RH) sides are determined from the operator's position and facing in the forward direction.

**PURPOSE:**

It has come to our attention that the above listed Model in the Serial Number Range Affected, had the incorrect snow thrower lift cable with trigger packaged with the **42" 3X Snow Thrower**. The incorrect snow thrower lift cable **746-1103A** measures 58.0" as shown in Figure 1.



**FIGURE 1**

**ACTION REQUIRED:**

1. Check if your inventory includes the above listed Model in the affected Serial Number Range.
2. Order from your parts source, Qty. (1) **946-05201** Snow Thrower Lift Cable. **NOTE: The 946-05201 cable measures 65.50" from the same reference points as shown in Figure 1.**
3. Remove the **746-1103A** lift cable from the **42" 3X Snow Thrower** packaging and place in your parts inventory. **NOTE: The 746-1103A is used on the following Models of Snow Throwers; 032** (190-032-101, OEM-190-032). **341** (190-341-100). **673** (190-673-100). **823** (190-823-101). **19A126** (19A-126-100).
4. Install the **946-05201** Snow Thrower Lift Cable when assembling the **42" 3X Snow Thrower**.
5. Submit a warranty claim for parts and labor (one Snow Thrower per claim).

Warranty: Normal warranty terms apply. Indicate Service Advisory **CC-890** and **746-1103A** as the original failed part on the claim. Repair time allowance is **0.2** Hrs.

**Mandatory>>>**When completing the warranty claim, select the drop down text shown below for the following claim fields:

**GROUP CODE:** Implement/Lift Mech

**FAIL CODE:** Incorrect Part

**WORK PERFORMED:** (Type In) Replaced Lift Cable

SERVICE MANAGER	PARTS MANAGER	SALES MANAGER	SERVICE TECH.	SERVICE TECH.

Circulate and Initial