

4-Cycle

Affected Models: All 4-Cycle Product with Metal Starter Pawls
 Affected S/N Range: June 11, 2015 and later (1F115Dxxxxx)
 Date: July 29, 2016
 Subject: Failure of the Starter Pawls to Engage

NOTE: These materials are prepared for use by trained technicians who are experienced in the service and repair of equipment of the kind described in this publication, and are not intended for use by untrained or inexperienced individuals. Such individuals should seek the assistance of an authorized service technician or dealer.

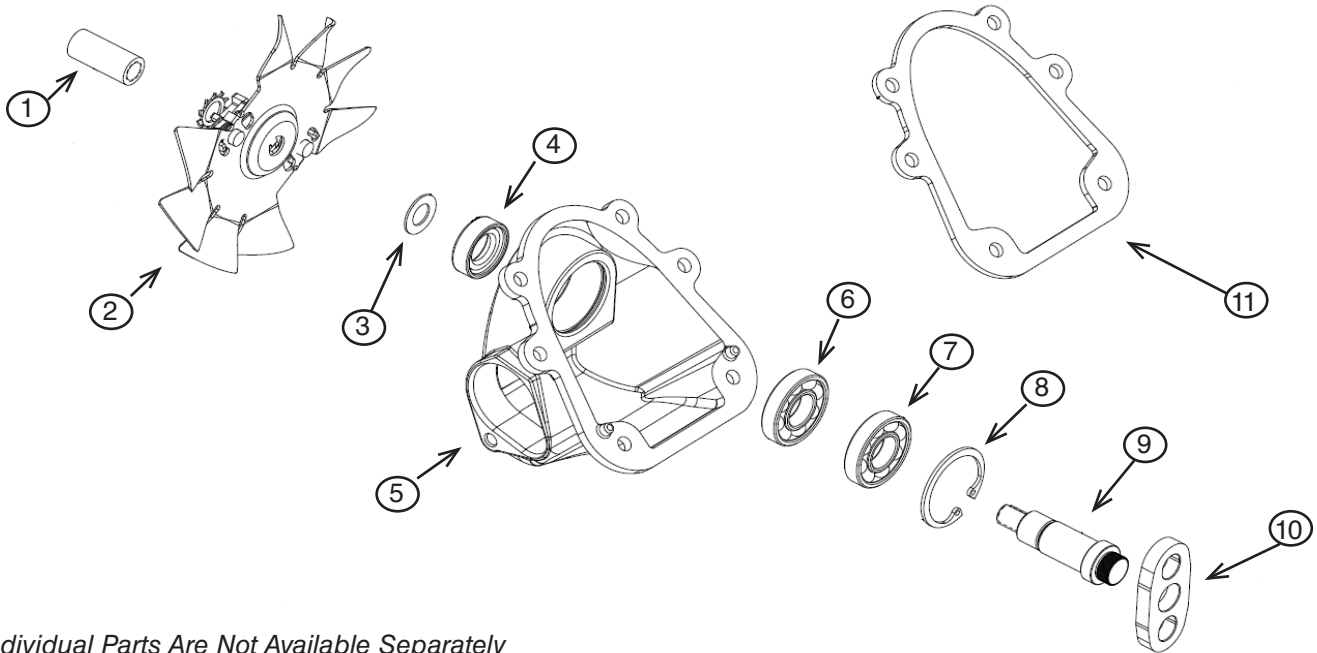
NOTE: Always wear eye protection while servicing equipment. Wear hearing protection when appropriate. Always work in a well ventilated area and follow all safety precautions when dealing with combustible materials.

NOTE: Left (LH) and Right (RH) sides are determined from the operator's position and facing in the forward direction

This Advisory is for Informational Purposes Only

Purpose: If a customer experiences the starter rope hanging (not retracting), not engaging the starter, or the pawls not engaging, remove the rear starter housing assembly. Check to see if the pawls are broken. If so, order the Oil Pan Assembly part number **753-08503**. Figure 1 shows the parts that make up the 753-08503 Oil Pan Assembly.

Item Number	Description	Item Number	Description
1	Starter Adapter	6	Ball Bearing
2	Pawl Assembly: Metal: Fan	7	Ball Bearing
3	Flat Washer:.344x.62x.033	8	Snap Ring
4	Viton Oil Seal	9	Starter Shaft
5	Oil Pan	10	Starter Arm
		11	Oil Pan Gasket



Individual Parts Are Not Available Separately

Figure 1