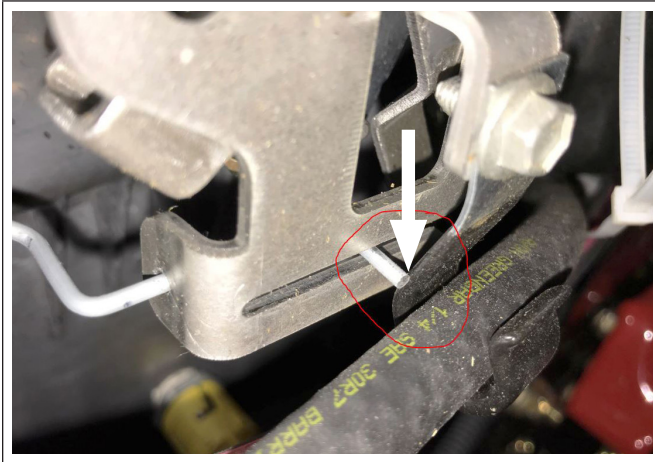
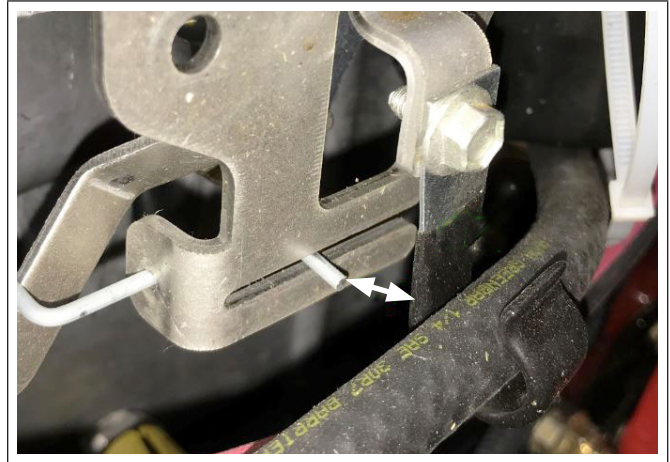


## Rough Running - Choke Linkage Interference

There have been isolated reports of KOHLER<sup>®</sup> 5400 Series engines running rough due to interference between the choke linkage and the fuel line J-clamp (see Figure 1). To correct the condition, reposition the J-clamp as shown (see Figure 2).



**Figure 1. Interference Between Choke Linkage and Fuel Line J-Clamp.**



**Figure 2. Reposition J-Clamp to Correct Condition.**

Normal warranty terms apply. Submit warranty claim using 47 154 01-S as the Defective Part Number and IF (Improper Fit) as the Failure Code. Labor Time of up to 0.3 hour using Labor Code 9999 for Misc. Labor.

Routing	Service Manager	Sales Manager	Parts Manager	Chief Mechanic	Mechanic No. 1	Mechanic No. 2	Mechanic No. 3	Mechanic No. 4	Return This To
Initial Here									